

# Model G6-42A TELEHANDLER



## Performance

### Rated Capacity

At 24 in. (610 mm) load center,  
6,600 lb (2,994 kg)

### Maximum Lift Height

42 ft (12.8 m)

### Frame Leveling

10 degrees

### Lift Speed (boom retracted)

Up: 14 sec  
Down: 10 sec

### Boom Speed

Extend: 20 sec  
Retract: 8 sec

### Travel Speed Forward

19.5 mph (31.4 kmph)

### Drawbar Pull (loaded)

18,000 lb (8,165 kg)

**Operating Weight** Without Carriage and Forks  
20,400 lb (9,253 kg)

## Standard Specifications

### Engine

Make and Model	John Deere 4045TF150
Fuel	No. 2 Diesel
Cycles	4
No. of Cylinders	4
Displacement	276 cu in (4.5 L)
Rated Speed	2,500 rpm
Max. Gross BHP	99 hp (74 kW)
Fuel Tank	38 gal (141 L)

### Engine Filters

Two-stage dry air cleaner – centrifugal pre-cleaner with continuous dust ejector and replaceable dry filter element.

Visual service indicator.

Replaceable element-type fuel filter/water separator. Full-flow replaceable-element engine oil filter.

### Electrical System

Voltage: 12V  
Alternator: 63 amp  
Battery: 810 cold cranking amps at 0°F

### Transmission

Dana VDT-12000 powershift with torque converter. 4-speed forward and 3-speed reverse.

Neutral start switch (park brake must also be engaged to start).

Full time 4-wheel drive.

Directional and gear change control on single steering column mounted lever.

### Axles

Trunnion mounted planetary 55° steer axles.

Integral steer cylinder.

High bias limited slip differential on front axle.

### Service Brakes

Inboard wet disc brakes on front axle.

### Parking Brakes

Wet disc spring-applied hydraulic release.

Light on dash indicates when brake is on.

### Tires

Standard: 13:00 x 24 – 12PR, G2 type.

Optional: 13:00 R24 radial tires,  
13:00 x 24 – 12PR, L2 rock tires.

### Cab

Certified ROPS/FOPS structure, adjustable seat and horn.

Forward, neutral, reverse lever on left of steering column.

### Steering 4-Wheel

Power steering with manual backup.

Operator selectable 4-wheel circle, 4-wheel crab, 2-wheel front.

### Instruments

Volt meter, hourmeter, engine oil pressure gauge, fuel gauge, water temperature gauge.

All gauges protected by clear acrylic cover.

### Controls

Grouped for operator comfort and convenience.

Boom lift and crowd on single joystick.

Right-hand tilt and sway lever.

Foot throttle.

### Hydraulic System-Implement

Single-section gear pump.

40 gal (151.4 L) system capacity.

8 micron filter with visual service indicator and suction strainer.

Lift, crowd, tilt and sway cylinders have holding valves intended to prevent dropping of load in the event of hose failure.

### Auxiliary Hydraulic Circuit

Used for all attachments equipped with cylinders or other hydraulic components.

Consists of valves, controls and hydraulic lines.

## Accessories & Options

### Cab Enclosure

Lockable, split door. Windshield wiper and washer. Heater and defroster fan.

### Light Group

2 cab-mounted headlights,  
1 back-up/tail/stoptlight and rotating beacon.

### Radial and Rock Tires

### Tilt on Joystick

### Cold Weather Group

Ether start and block heater.

## Attachments

### Standard Carriage

48 in. (1.2 m) or 72 in. (1.8 m)

### Side Tilt Carriage\*

48 in. (1.2 m) or 72 in. (1.8 m)

### 100° Swing Carriage\*

72 in. (1.8 m) Carriage

### Drywall Carriage\*

72 in. (1.8 m)

### Pallet Forks

2 x 4 x 48 in.  
(51 mm x 102 mm x 1.2 m)

### Cubing Forks

2 x 2 x 48 in.  
(51 mm x 51 mm x 1.2 m)

### Vertical Mast\*

6 ft (1.8 m) Quick-Switch

### Swing Mast\*

6 ft (1.8 m)

### Bucket

0.75 cu yd (0.57 m<sup>3</sup>) 60 in wide  
or 1.25 cu yd (0.95 m<sup>3</sup>) 74 in wide  
1.25 cu yd (0.95 m<sup>3</sup>) 102 in wide

### Truss Boom With\* or Without Winch

10 ft (3.0 m) or 15 ft (4.6 m)

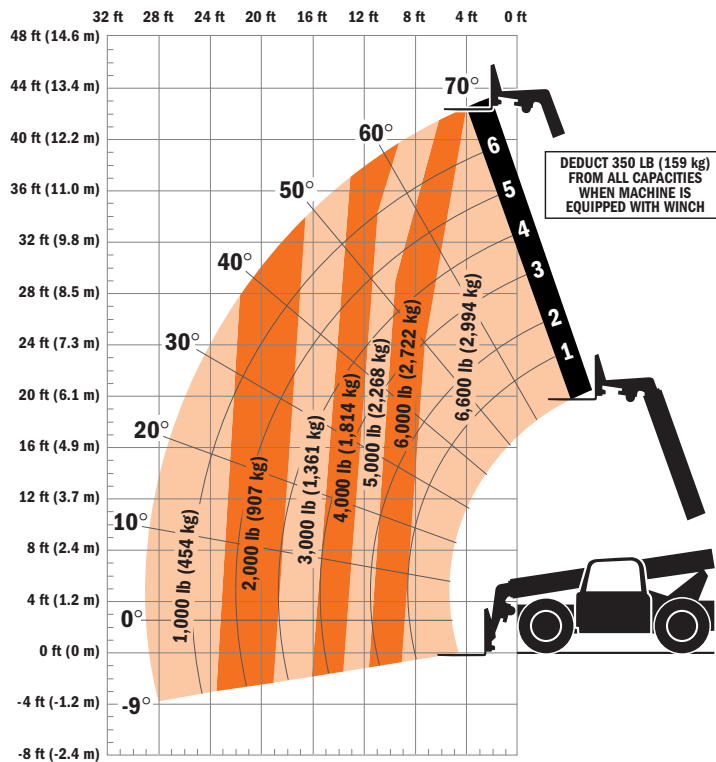
### Personnel Work Platform

### Boom Head Mounted Winch\*

\*Requires auxiliary hydraulics



# Model G6-42A TELEHANDLER



## Dimensions

Length (less forks) . . . 212.6 in. (5.40 m)  
 Width . . . . . 95.5 in. (2.41 m)  
 Height . . . . . 94 in. (2.38 m)  
 Wheelbase . . . . . 128 in. (3.25 m)  
 Ground Clearance . . . 16.4 in. (416 mm)  
 Outside Turning Radius . . 144 in. (3.65 m)  
 Max. Reach from Front Tires to  
 24 in. (609 mm) Load Center . . . . . 29 ft  
 (8.83 m)

## IMPORTANT

Rated lift capacities shown are with machine equipped with carriage and pallet forks. The machine must be level on a firm surface with undamaged, properly inflated tires. Machine specifications and stability are based on rated lift capacities at specific boom angles and boom lengths. (If specifications are critical, the proposed application should be discussed with your dealer.)

DO NOT exceed rated lift capacity loads, as unstable and dangerous machine conditions will result.

DO NOT tip the machine forward to determine the allowable load.

Use only JLG approved attachments with proper material handler model/attachment load capacity charts displayed in the operator's cab. OSHA requires all rough terrain forklift operators be trained according to OSHA 29 CFR 1910.178 (1).



## JLG Industries, Inc.

1 JLG Drive  
 McCConnellsburg, PA 17233-9533  
 Telephone 717-485-5161  
 Toll-free in US 877-JLG-LIFT  
 Fax 717-485-6417  
 www.jlg.com

*Due to continuous product improvements, JLG Industries reserves the right to make specification and/or equipment changes without prior notification. This machine meets or exceeds ASME B56.6-2002 as originally manufactured for intended applications.*

Form No.: SS-G642A-0104-15M  
 Part No.: 3132207  
 R010502  
 Printed in USA